

# 107

## E MAIN ST

### THE ODDFELLOWS' LODGE

Unique opportunity to bring your restaurant/food-service concept to life as a tenant of the historic Oddfellows' Lodge building on E. Main Street.



## PROPERTY HIGHLIGHTS

- 1420+ Square Feet
- 2 Restrooms
- Fully ADA Compliant
- Outdoor Dining Options Available
- Blank Canvas



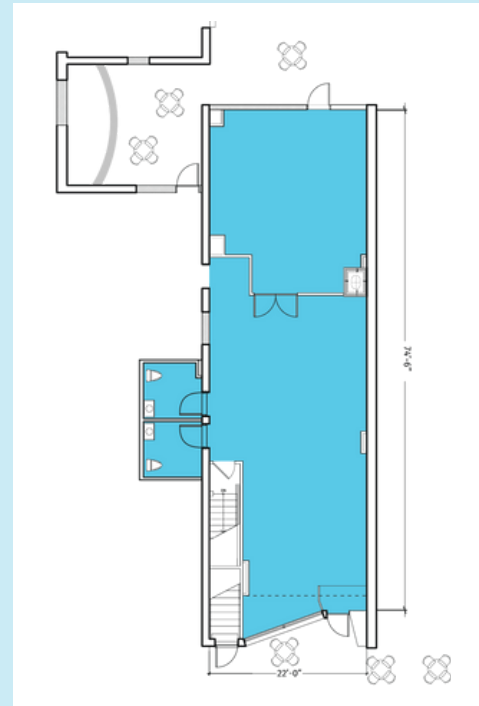
**163+ public parking spaces within a one-block walk**



**Natural Lighting**



**Historic Tin Ceiling and Building Features**



**READY TO MOVE FORWARD?  
LET'S TALK.**

**Stacy Adam**  
Leasing & Operation Partner  
Van Wert Forward  
(419) 203-2222  
stacyadam1@gmail.com



# 107 E MAIN ST

## THE ODDFELLOWS' LODGE

HISTORIC CHARM | MODERN AMENITIES

### WHY VAN WERT?

#### TOTAL RTA



**46,596**

**FREQUENT SHOPPERS**



**24,597**

**TOTAL HOUSEHOLDS**



**\$75,014**

**AVERAGE HH INCOME**

#### VAN WERT



**OVER 15K**

**VEHICLES PER DAY**



**7,900+**

**VAN WERT EMPLOYED**



**\$54K**

**IN DISPOSABLE INCOME**



### MARKET POTENTIAL

BASED ON ECONOMIC LEAKAGE FOR KEY SECTORS



**\$65+M**

**GROCERY**



**\$56+M**

**RESTAURANTS**



**\$22+M**

**CLOTHING**

VAN WERT  
**FORWARD**



Scan to learn  
more about the  
Van Wert Forward  
Revitalization.